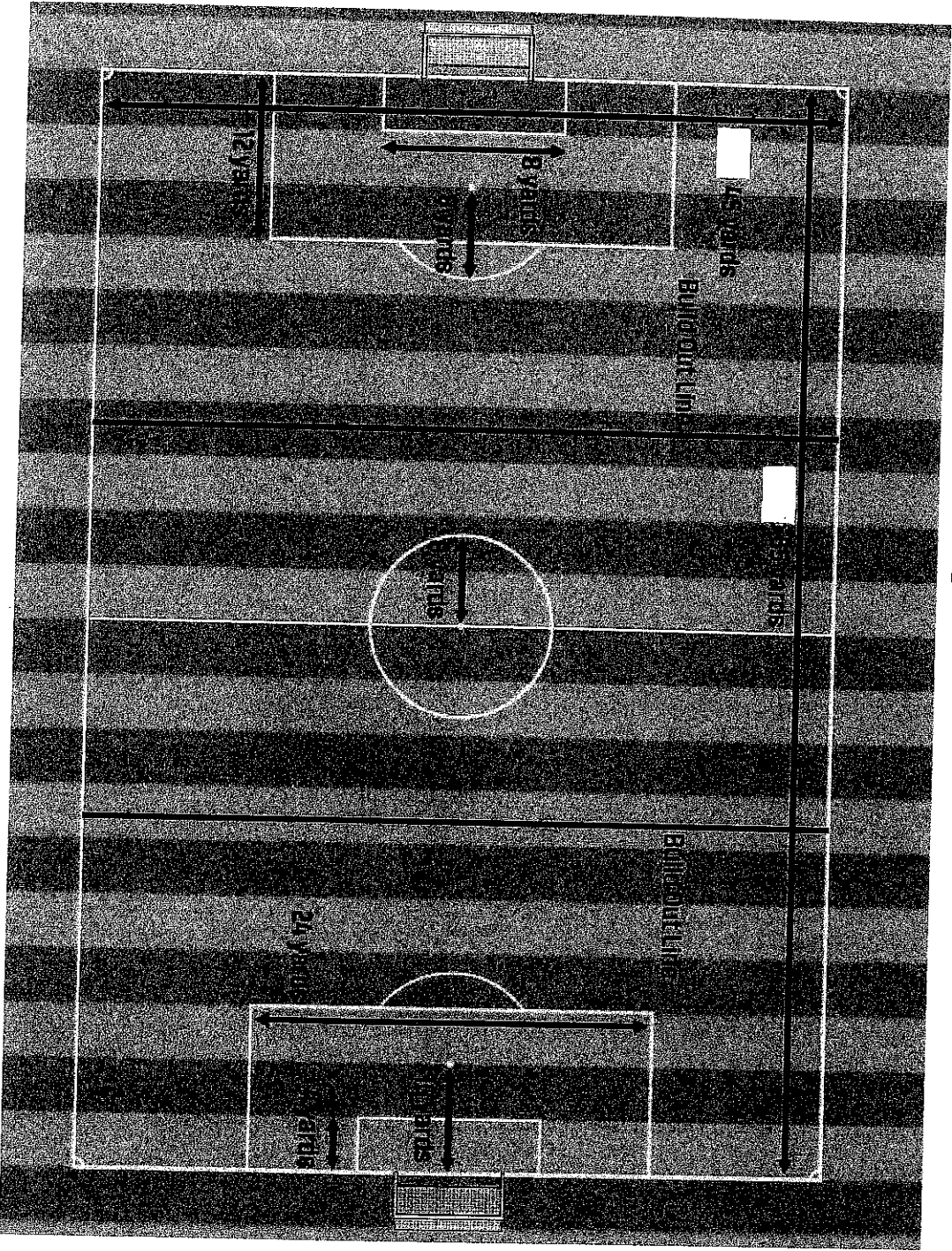


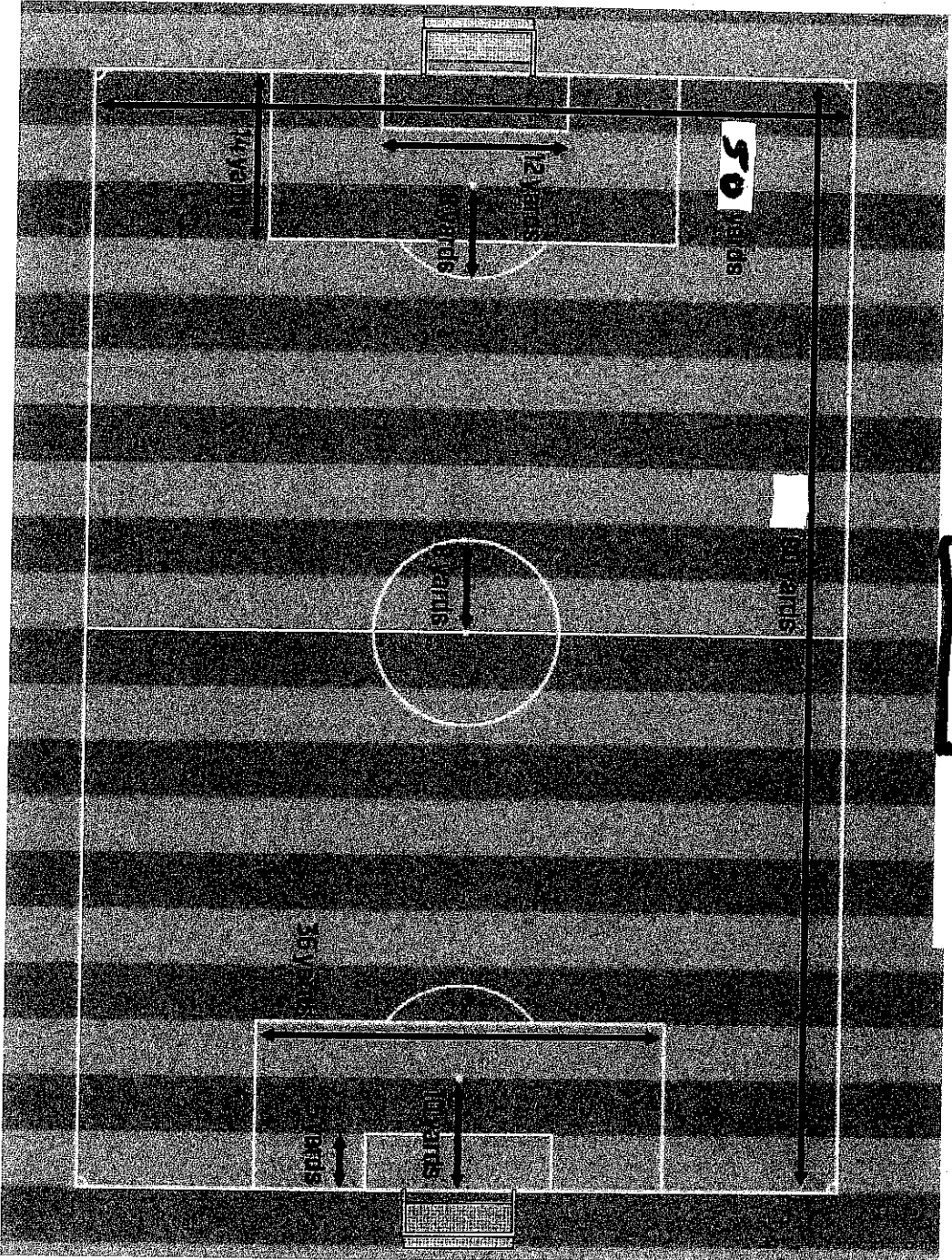
# \* TRAVEL \*

7V7 Developmental Field for U9, U10



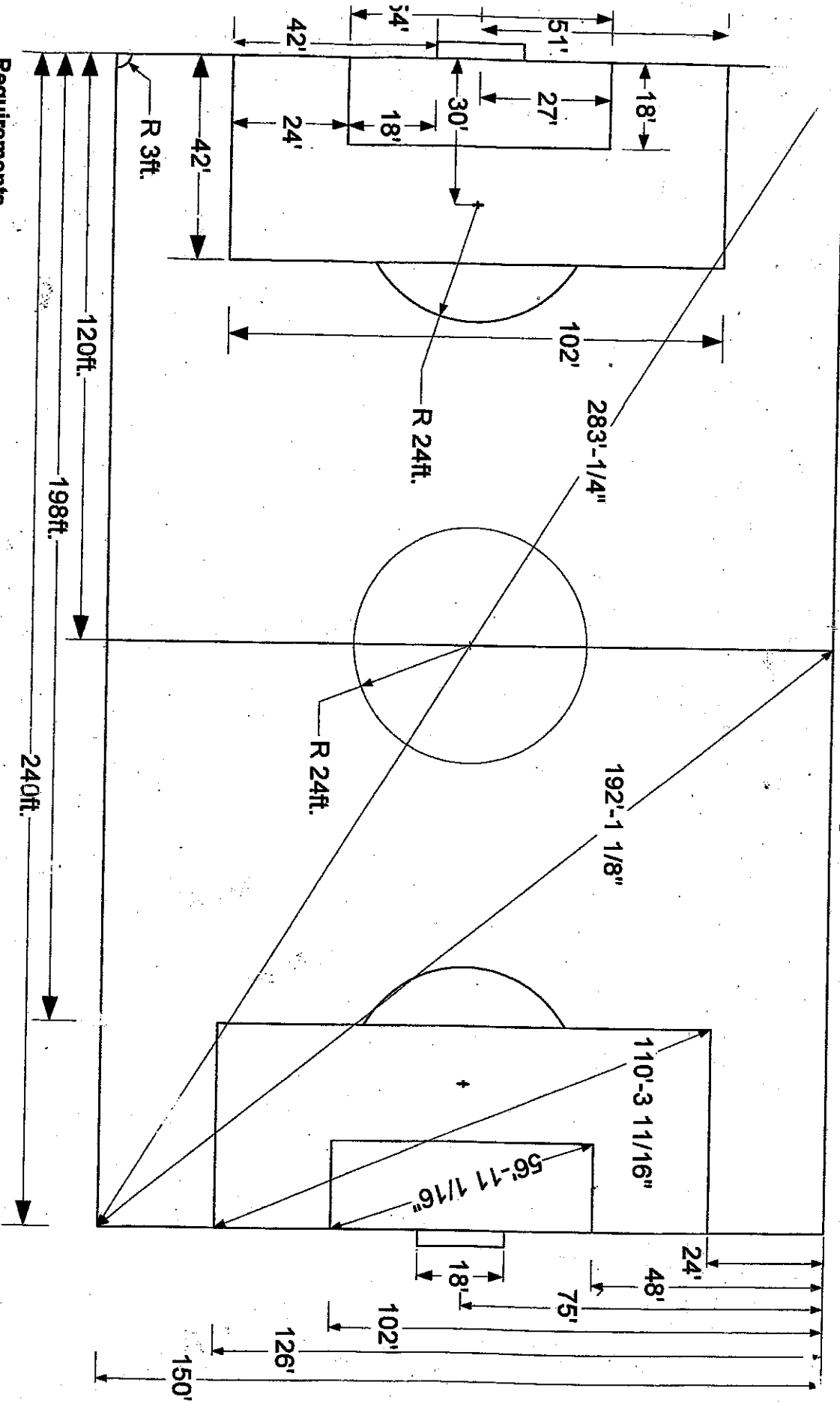
**\* TRAVEL \***

9V9 Small Sided Field for U11, U12



U11 + U12

Soccer Club - Guidelines  
50 yd X 80 yd Soccer Field



**Requirements**

Length: 70 - 80 yds (80 recommended)

Center Circle: 8 yd radius

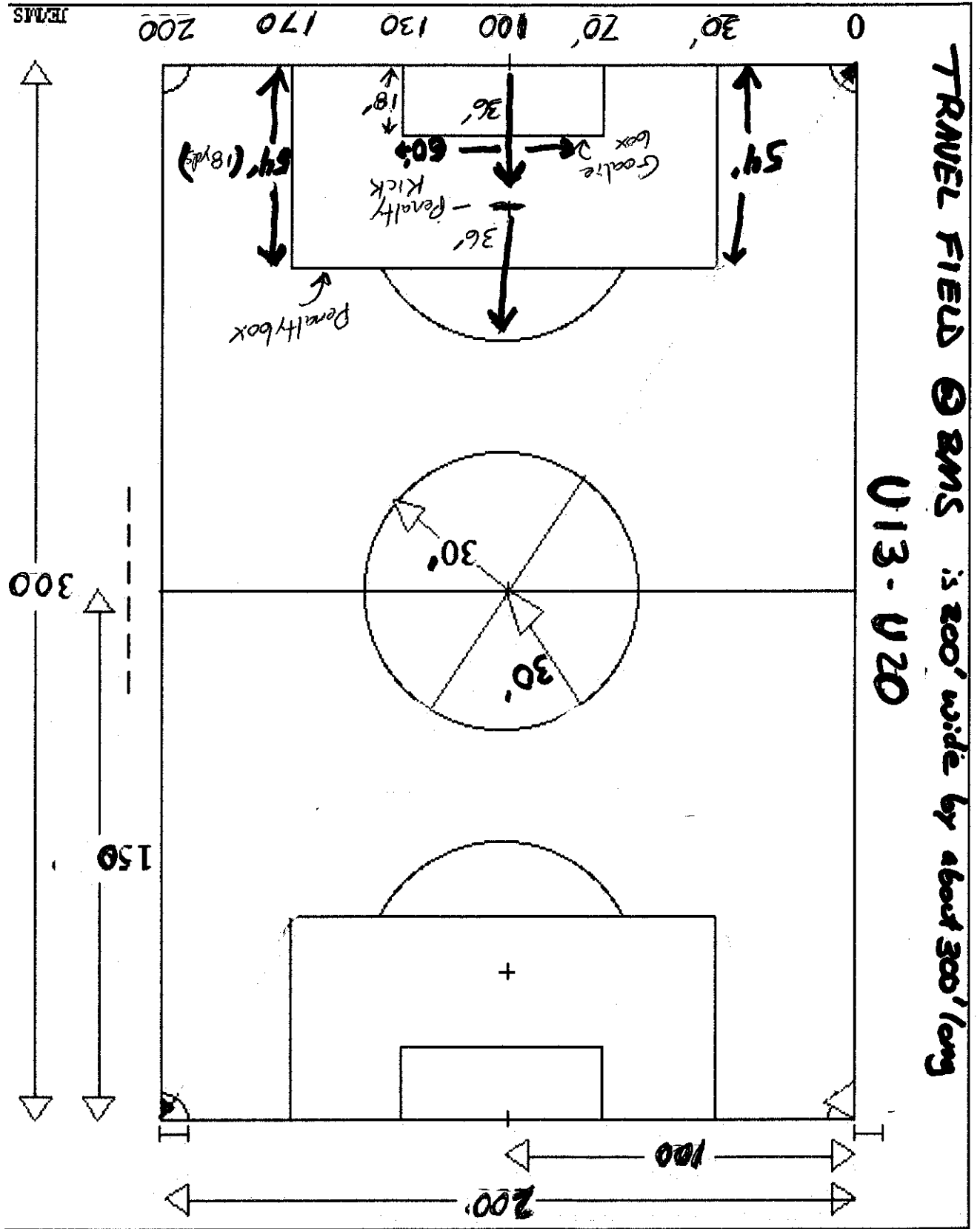
Goal area: 6 yds from inside of each post and 6 yd into the field

Penalty Area: 14 yds from inside of each post and 14 yds into the field

Width: 40 - 50 yds (50 recommended)

Corner Arcs: 1 yd radius

**Key Point**



TRAVEL FIELD @ RMS is 200' wide by about 300' long  
U13 - U20